

Junkers Profly

Service Bulletin

Check of the mounting plate at the rocket tube

1. General:

Editor: Junkers Profly GmbH, Am Flugplatz 1, 95326 Kulmbach
E-Mail: junkers_profly_gmbh@t-online.de
Phone: 00499221- 879312 Fax: 00499221-879313

Date of issue: 11.03.2009

Validity: at once

To be performed until: before the next take off

Issue number: TM – 001-09 – Mounting plate rocket – Revision 02

Previous information: none

Concerned series: all rockets of the series Softpack

Concerned S/N: all

Reason: possible cracking at the welded connections between rocket tube and rocket mounting plate

Subject: visual check of the welded connections (s. photo 1)

2. Material

Required equipment: flashlight optionally mirror (check)

At subsequent addition with holing screws,
Drilling machine, borer 6.5 mm, screws M 6, selflocking
nuts and M6 washers.

3. Realization

Maintenance grade:	low
Qualification:	Technical expert
Repetition:	on the occasion of the yearly check
Communication:	if any cracks are found the complete rocket tube has to be sent to Junkers Profly GmbH.

4. Safety advise

addition: To prevent vibrations, the rocket mounting plate has to be fixed at the UL-aircraft with four fixing screws, if not possible by the construction of the aircraft, at least with three screws. For this two additional drillings with 6.5 mm have to be drilled to the two predrilled drillings and fixed with M6 screws, according to the advice of the UL aircraft manufacturer
s. photo 2

Photo 1

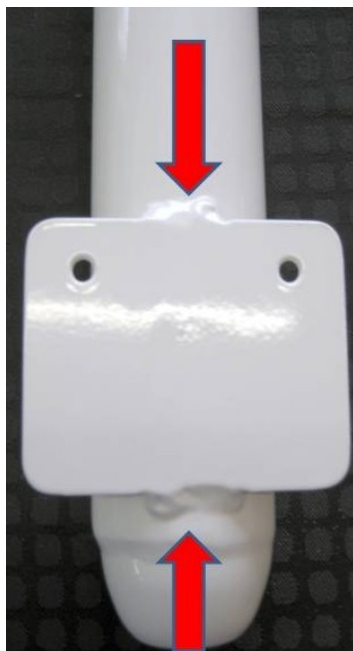


Photo 2

